



## Newest Design Bridge Column Type Load Cells ZTM

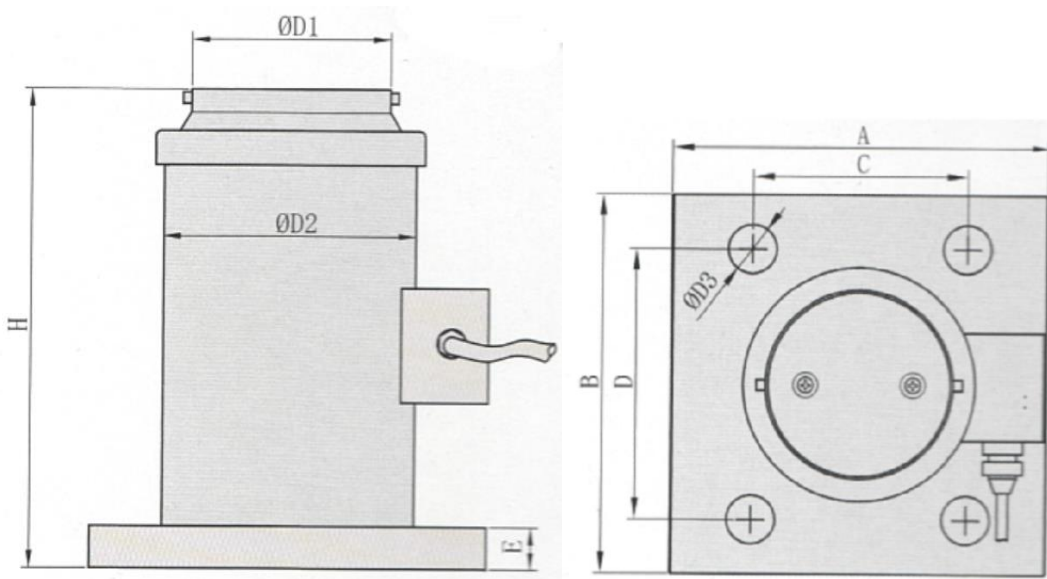


Rated load:10T,20T, 30T, 40T

Main features:

Alloy steel & stainless structure; bellows hermetically sealed by laser, nickel plated, waterproof and anti-corrosion, suitable for multiform environments; suitable for electronic platform scales, hopper scales, and other electronic weighing devices.

Whole multi column structure, novel and unique, high strength, good rigidity, anti-twist, whole structure, higher overload, anti-shock and anti-fatigue , small volume, light weight , exceeding tradition, fine interchangeability.



	量程(t) rated load	H	A	B	C	D	E	ØD1	ØD2	ØD3
110E10~40t	10~30	170	140	140	80	100	18	69	89	18
110E50~60t	50~60	214	160	160	124	124	20	79	120	22
110E70~100t	70~100	280	200	200	145	145	25	89	140	22

## Specification

Precision : C2 & C3

Comprehensive Error(%F.S) :  $\pm 0.03$  &  $\pm 0.02$

Rated Output(mv/v) :  $2.0 \pm 0.01$

Creep(%F.S/30min) :  $\pm 0.023$  &  $\pm 0.016$

Zero Balance(%F.S) :  $\pm 1.5$

Input Resistance( $\Omega$ ) :  $700 \pm 10$

Output Resistance( $\Omega$ ) :  $700 \pm 5$

Insulation Resistance(M $\Omega$ ) :  $\geq 5000(100VDC)$

Temp. Effect on Span(%F.S/10 $^{\circ}C$ ):  $\pm 0.017$  &  $\pm 0.011$

Temp. Effect on Zero(%F.S/10 $^{\circ}C$ ):  $\pm 0.029$  &  $\pm 0.019$

Compensated Temp. Range( $^{\circ}C$ ) :  $-10 \sim +40$

Use Temp. Range( $^{\circ}C$ ) :  $-30 \sim +70$

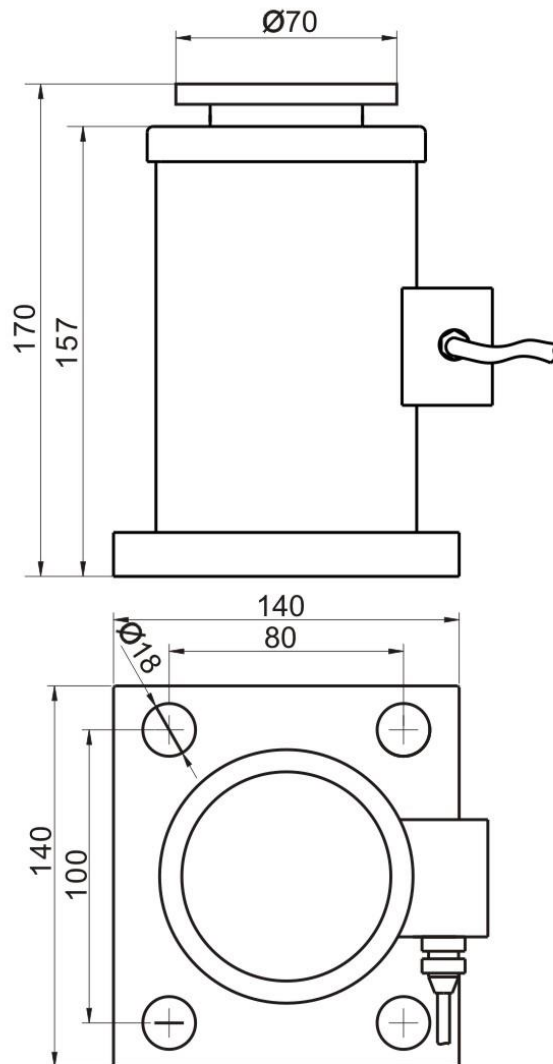
Excitation Voltage(V) :  $10 \sim 12(DC)$

Safe Overload (%F.S) : 150

Ultimate Overload (%F.S) : 200

Defend grade : IP68

Installation size (mm):



Installation:----Please click on the thumbnail to enlarge, if the size of installation is not clear !

