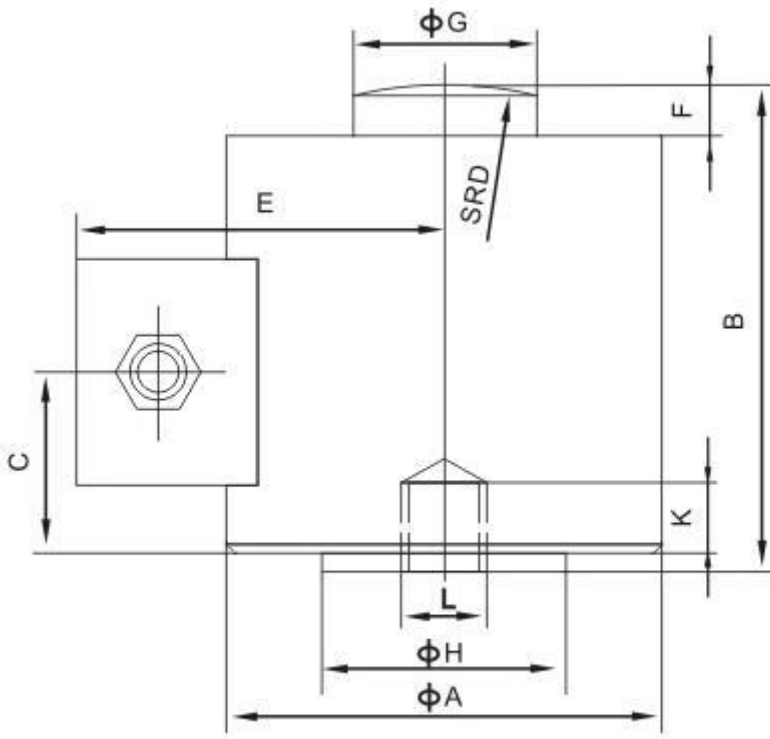




### Column Type Compression Load Cells ZTC



额定载荷(t) Rated Load	A	B	C	D	E	F	G	H	K	L
20	76	82.6	48	150	56	9	31.8	48	10	M12
25	100	117	65	150	76	12	38	38	14	M20
30	100	117	65	150	76	12	38	38	10	M12
40	100	117	65	150	76	12	38	38	14	M20
50,60	107	127	66	200	81	12.7	58	64	14	M20
70	125	142	91	250	86.5	13	58	64	14	M20
100	165	184	104	300	111.8	20	70	70	20	M20
150	165	184	104	300	111.8	20	70	78	20	M20
200	223	250	152	500	137.5	20	100	112	36	M24
300,400	223	250	152	500	137.5	20	108	112	36	M24

**Specification**

Application :	Truck Scales , Railway Scales, Axle-load scales , Floor Scales
Rated Load	10,25,30,40,50,60,70,100, 150,200, 300,400t
Sensitivity	2.0±0.002mV/V
Total error	±0.03,±0.05%,±0.1F.S
Creep(30min)	±0.03 %F.S
Zero balance	±1%F.S
TCO	±0.02%F.S/10°C
TC SPAN	±0.02%F.S/10°C
Input resistance	400±10Ω
Output resistance	352±2Ω;352±5Ω(L≥15m)
Insulation resistance	≥5000MΩ
Operating Temp Range	-30~+70°C
Safe load limit	150%F.S
Over load limit	250%F.S
Recommend excitation	10~12V DC
Maximum excitation	15V DC
Protection Class	P68
Cable	Length :L:12m(20t),14m(25-40t),6m(5-150t),20m(20-400t) Diameter: Φ8mm