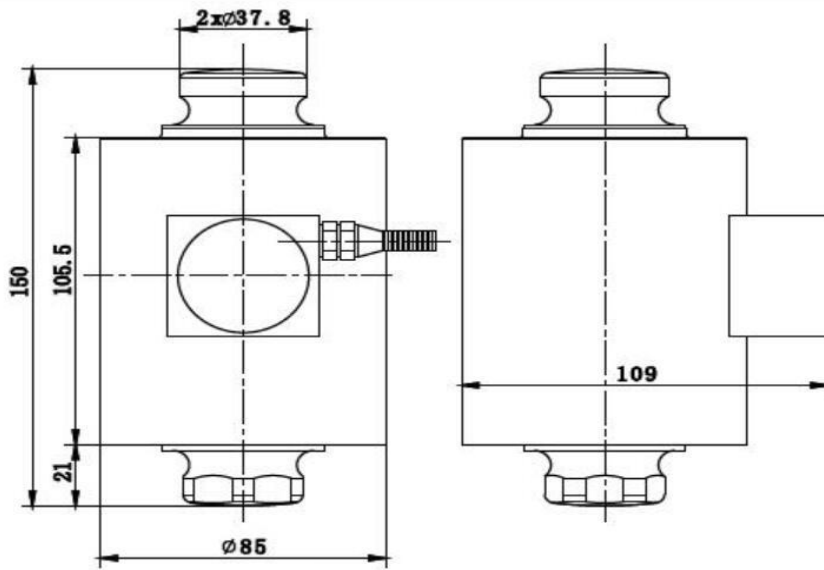
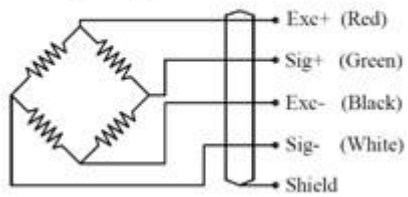




Compression Load Cells ZSNC-A



Wiring Diagram



Specification

Application	Truck Scales, Railway Scales, Axle-load scales
Rated Load	20, 25, 30, 40, 50t
Accuracy Class	0.03, 0.05
Sensitivity	2.0±0.002mV/V
Non-linearity	0.03%F.S, 0.05%F.S
Hysteresis error	0.03%F.S, 0.05%F.S
Creep(30min)	±0.02 %F.S
TCO	±0.02%F.S/10°C
TC SPAN	±0.02%F.S/10°C
Input resistance	1160±10Ω
Output resistance	1005±5Ω;
Insulation resistance	≥5000MΩ
Safe load limit	150%F.S
Over load limit	200%F.S
Operating Temp Range	-30~+70°C
Recommend excitation	10~12V DC
Protection Class	IP68
Construction	Alloy Steel / Stainless steel
Cable	Length :20-25T:12m, 30T: 14m, 40-50T :16m Diameter:Φ6mm