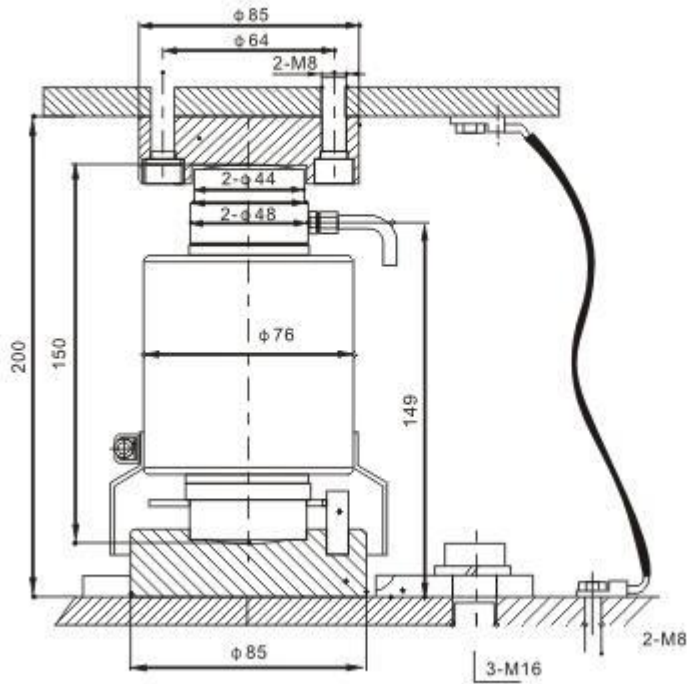
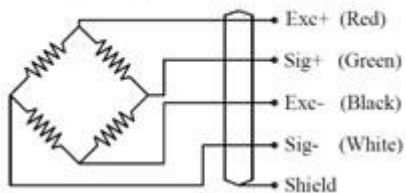




OIML Compression Load Cells ZSFY-A 700ohm Output



Wiring Diagram



Specification

Application :	Truck Scales, Railway Scales, Axle-load scales, Floor Scales
Model :	ZSFY-A
Capacity	10,15,20,25,30,40,50T
Output Sensitivity	2.0 ± 0.002 mV/V
Accuracy Class	C2-C5
TCO	±0.02 F.S/ 10 °C
TC SPAN	±0.02 F.S/ 10 °C
Zero Balance	±1.0 % F.S
Input Impedance	700 ± 20 Ω
Output Impedance	706 ± 7 Ω
Insulation Resistance	≥5000 MΩ
Temperature Range Compensated	-10~+40°C
Operating Temperature Range	-30~+70°C
Recommend Excitation Voltage	10~12V /DC
Maximum Excitation Voltage	15V / DC
Safe Overload	150 %F.S
Ultimate Overload	250 %F.S
Protection Grade	IP68
Material	Alloy Steel / Stainless Steel
Cable Length	φ5×8M (10T), φ5×10M (15T), φ5×14M (30T), φ5×16M (40-50T)