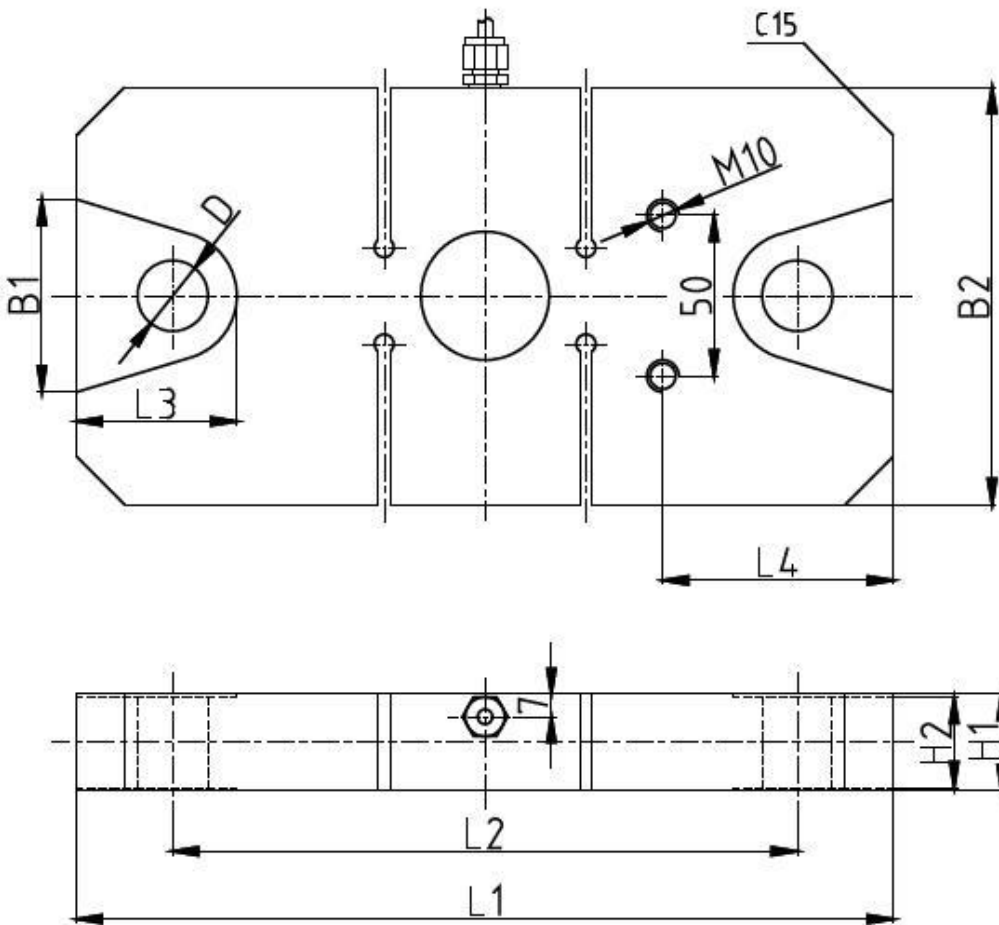
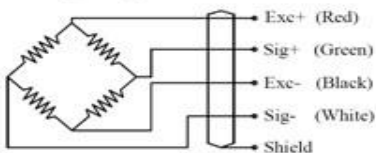


### S Type Tension Load Cells STM



量程	L1	L2	L3	L4	H1	H2	B1	B2	D
5t	255	201	50	72	30	28	60	130	Φ22
10t	295	215	70	92	40	38	84	130	Φ28

#### Wiring Diagram



**Specification**

Application :	Crane Scales, Hopper Scale
Model :	STM
Capacity	5,10T
Output Sensitivity	2.0 ± 0.002 mV/V
Total Error	± 0.05 %F.S
Creep(30 min)	± 0.03 %F.S/30 Mins
TCO	±0.02 F.S/ 10 °C
TC SPAN	±0.02 F.S/ 10 °C
Zero Balance	±1.0 % F.S
Input Impedance	400 ± 10 Ω
Output Impedance	352 ± 3 Ω
Insulation Resistance	≥5000 MΩ
Recommend Excitation Voltage	10~12V /DC
Maximum Excitation Voltage	15V / DC
Operating Temperature Range	-30°C ~ +70°C
Temperature Range, compensated	-10°C ~ +40°C
Safe Overload	120 %F.S
Ultimate Overload	180 %F.S
Protection Grade	IP67
Material	Alloy Steel
Cable Length	φ5×12M