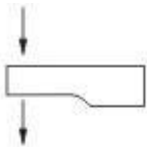
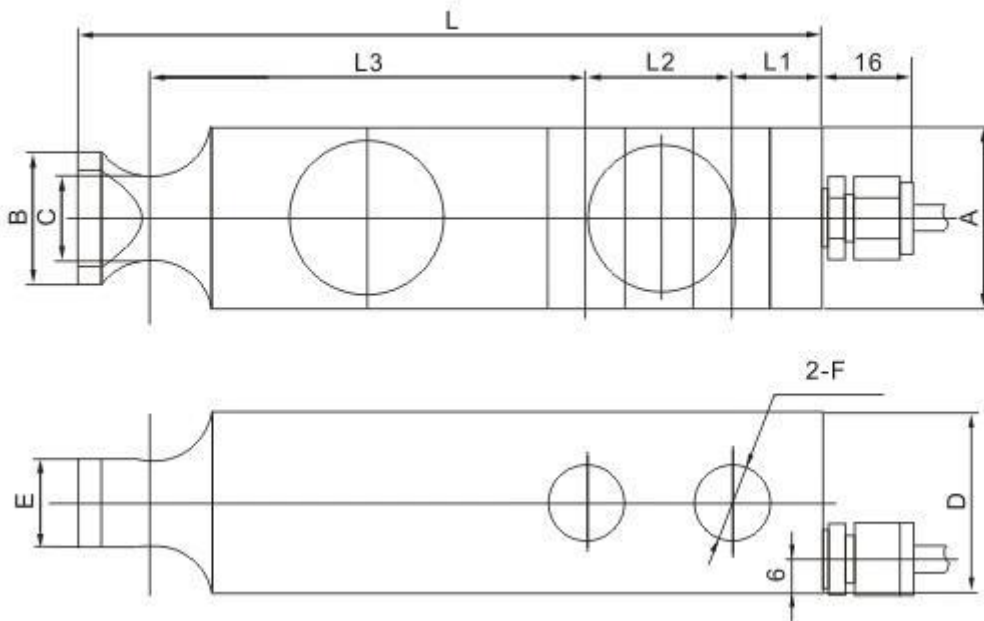
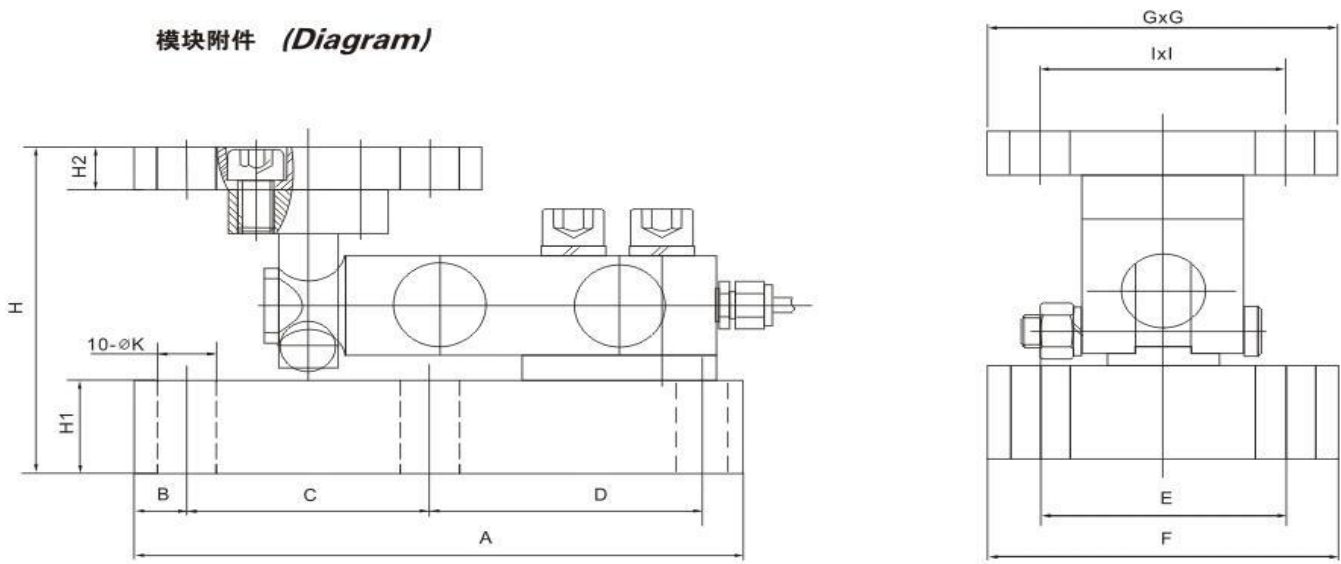


Single Point Ended Shear Beam Load Cells Sensor SQBK-A



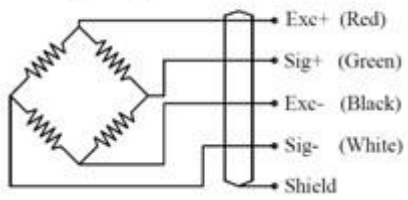
额定载荷(t) Rated Load	L	L1	L2	L3	A	B	C	D	E	F
1~2.5	130	15.8	25.4	76.2	32	$\phi 23.4$	$\phi 15.2$	32	15.8	$\phi 13.5$
3~5	171.5	19	38.5	93.5	38	$\phi 30.5$	$\phi 21.8$	38	22.9	$\phi 20$

模块附件 (Diagram)



额定载荷(t) Rated Load	A	B	C	D	E/I	F/G	H1	H2	H	K
1~2.5	175	15	70	75	70	100	30	14	105	17
3~5	236	20	90	106	90	130	35	20	132	21

Wiring Diagram



Specification

Application	Hopper Scales ,Blending Scales
Rated Load	1, 2, 2.5, 3, 5T
Sensitivity	3±0.003mV/V
Total Error	±0.05%F.S
Creep Error (30mins)	±0.03%F.S
Zero balance	±1%F.S
TCO	±0.02%F.S/10℃
TC SPAN	±0.02%F.S/10℃
Input resistance	400±20Ω
Output resistance	352±3Ω
Insulation resistance	≥5000MΩ
Temperature Range. Compensated	-10~+40℃
Operating Temp Range	-30~+70℃
Safe load limit	120%F.S
Over load limit	150%F.S
Recommend excitation	10~12V DC
Maximum excitation	15V DC
Protection Class	IP67(0.25-0.75t) IP68 (1-10t)
Construction	Alloy Steel
Cable: Length;	5m
	Diameter:Φ5mm