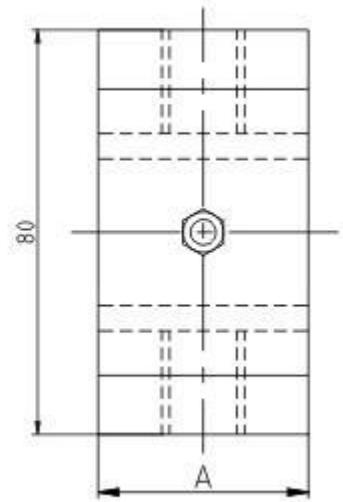
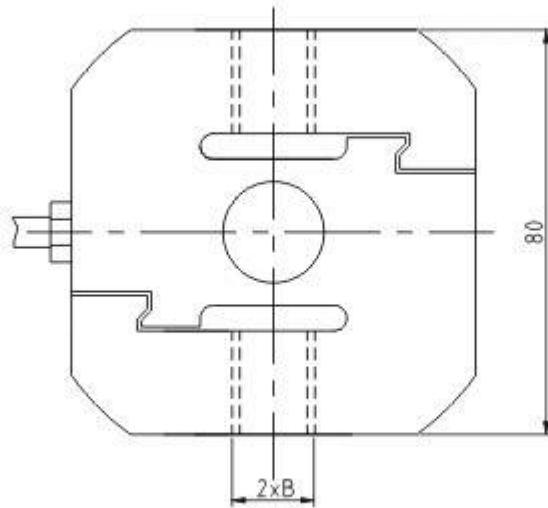


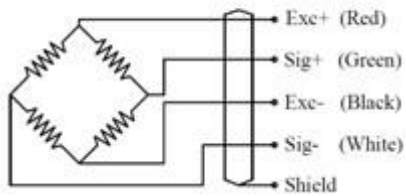


### OIML S Type Tension Load Cells PSTM



量程	A	B
2	42	M16
6	45	M24×2
7.5		M24
8		M24×2

#### Wiring Diagram



**Specification**

Application :	Crane Scales
Model :	PSTM
Capacity	2, 3, 5, 6, 7.5, 8T
Output Sensitivity	2.0 ± 0.003 mV/V
Total Error	± 0.05 %F.S
Creep(30 min)	± 0.05 %F.S/30 Mins
TCO	±0.03 F.S/ 10 °C
TC SPAN	±0.03F.S/ 10 °C
Zero Balance	±1.0 % F.S
Input Impedance	1100 ± 10 Ω
Output Impedance	1050 ± 3 Ω
Insulation Resistance	≥5000 MΩ
Recommend Excitation Voltage	10~12V /DC
Maximum Excitation Voltage	15V / DC
Operating Temperature Range	-30°C ~+70°C
Temperature Range,compensated	-10°C ~+40°C
Safe Overload	150 %F.S
Ultimate Overload	200 %F.S
Protection Grade	IP66
Material	Alloy Steel
Cable Length	φ5×0.5M