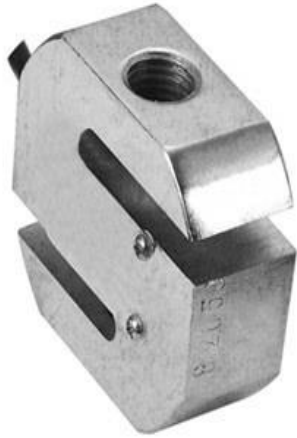
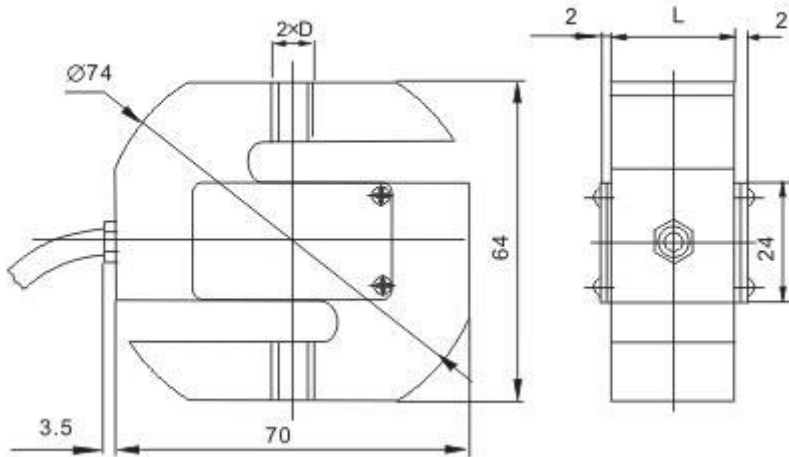




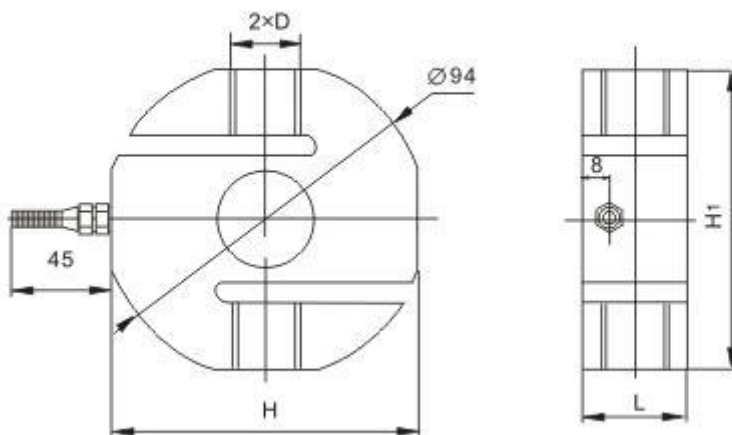
S Type Tension Load Cells PST



20~1000kg



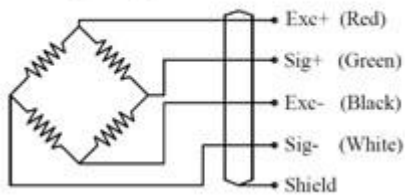
1.2~10t



额定载荷(kg) Rated Load	D	L
20~150	M8	12
200~500	M12	20
700~1000	M12	25

额定载荷(t) Rated Load	D(mm)	L(mm)	H	H1
1.2~5	M20	32	88	90
7.5	M24	40	88	90
10	M30x2	50	110	110

Wiring Diagram



Specification

Application :	Crane Scales
Model :	PST
Capacity	20, 30, 50, 100,150, 200, 250, 300, 500, 700,1000KG,1.2T,1.5T,2T,2.2T,3.5T,7.5T,10T
Output Sensitivity	2.0± 0.002 mV/V
Creep(30 min)	0.02 %F.S/30 Mins
Zero Balance	±1.0 %F.S
Input Impedance	400 ± 10Ω
output Impedance	352 ± 2Ω
Insulation Resistance	≥5000 MΩ
Recommend Excitation Voltage	10-12V/DC
Maximum Excitation Voltage	15V/DC
Operating Temperature Range	-30~+70℃
Safe Overload	120 %F.S
Ultimate Overload	200 %F.S
Protection Grade	IP67 (20-1000KG) / IP68(1.2-7.5T)
Material	Alloy Steel
Cable Length	φ5×3M (20-1000KG), φ6×3M (1.2-7.5T)