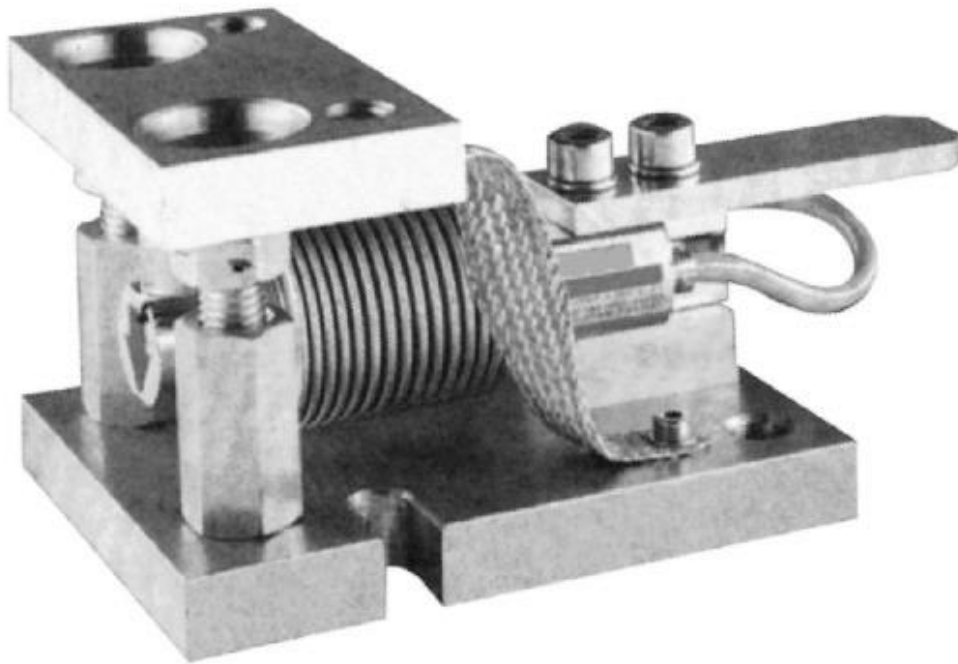
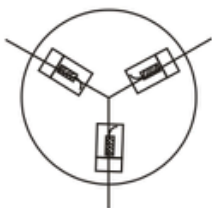
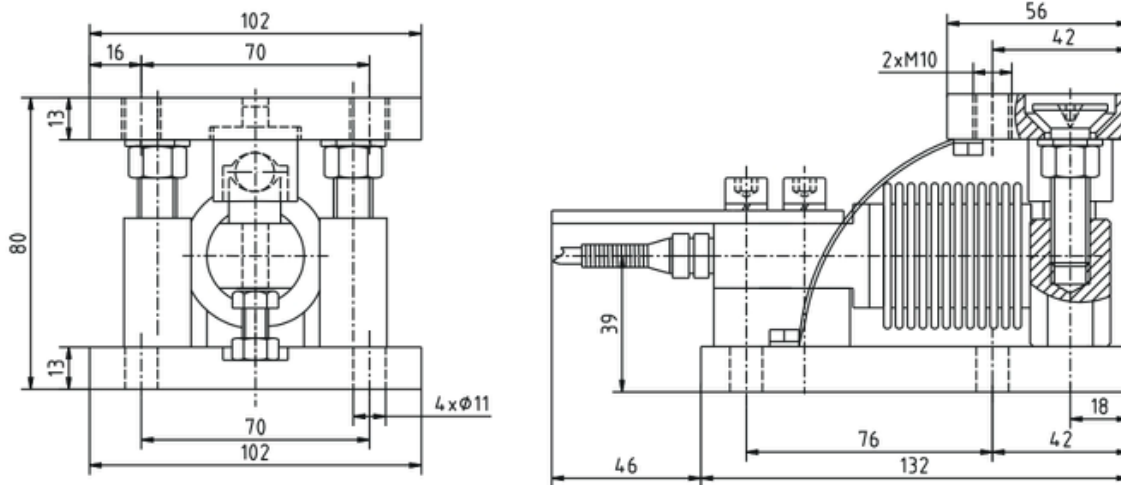




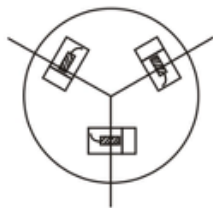
Shear Beam Load Cells HSA with D Type Weighing Module



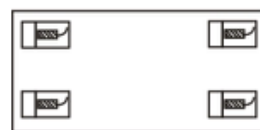
总装D模块 (Diagram D)



径向安装 Radial installation



切向安装 Cutting installation



矩形安装 Rectangle installation

Specification

Application	Hopper Scales ,Belt Scales
Rated Load	5, 10, 20, 30, 40,50,75, 100, 150, 200, 250, 300, 500kg
Temperature Range Compensated	-10~+40℃
Sensitivity	2±0.002mV/V
Operating Temp Range	-30~+70℃
Accuracy Class	C2-C5
Safe load limit	120%F.S
Over load limit	150%F.S
Zero balance	±1%F.S
TCO	±0.02%F.S/10℃
TC SPAN	±0.02%F.S/10℃
Insulation resistance	≥5000MΩ
Maximum excitation	15V DC
Recommend excitation	10~12V DC
Protection Class	IP68
Input resistance	400±10Ω
Construction	Alloy Steel-S/-SS;Stainless steel
Output resistance	352±3Ω
Cable: Length;	3m, 5m(20kg) Diameter:Φ5mm