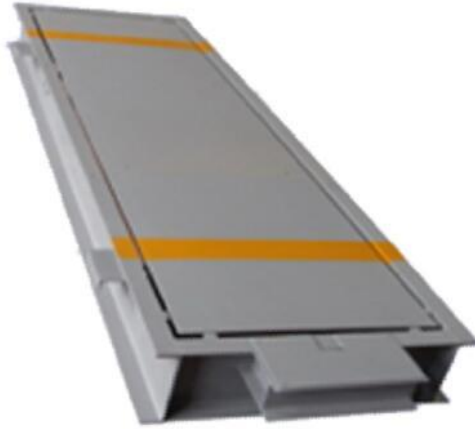


Portable Fixed Truck Axle Weighing Scale GCF-C



Features:

Applicable for occasions that have no high precision requirement, such as overload detection, Logistics loading

Occupying small space

Static and dynamic dual-use

With a special designed cover for easy installation and maintenance

The testing system for overloading can be combined when the axle weigher equips with light curtains, sensing loops ,tyre discriminator, surveillance cameral system and central control system.

Specification:

Model			
Size(WxL)	3.2m×0.8m	3.2m×2.2m	3.2m×3.4m
Capacity (t)	30	50	80
Static precision	Class III		
Dynamic precision	Higher than 1/200		
Safe overload	150% F.S		
Weighing speed	≤5km/h		
Power	AC and DC power supply		