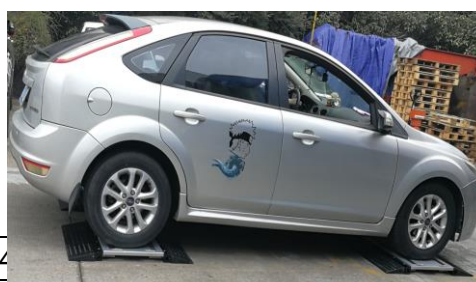


Wireless Portable Axle Truck Weighing Scale GCF-8WC (S Series)



It is widely used by traffic management and road administration departments to check the overload and over-transportation of cars on highways, providing a strong basis for traffic management and road administration departments, or used for static weighing materials in major factories, mines, docks, freight yards, construction sites and other occasions.

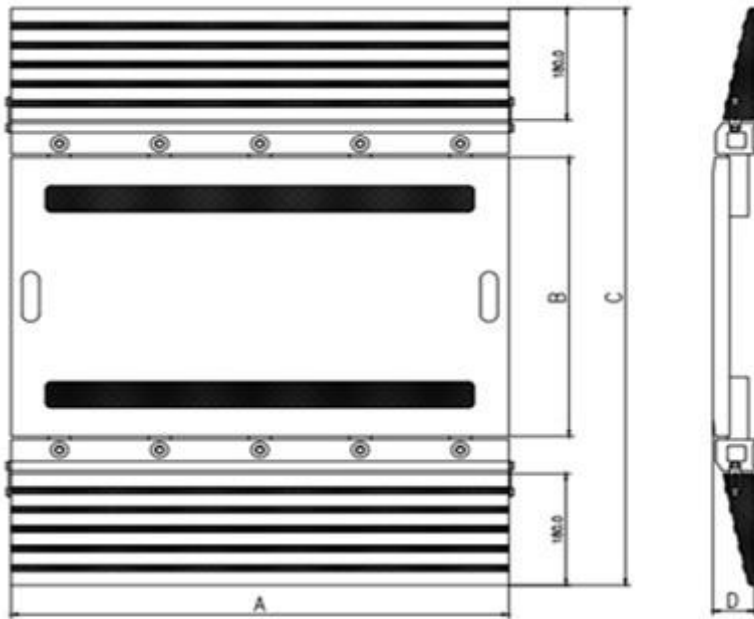


Spe

| | | |
|-------------------------------------|-------------|-------------|
| Pad | 500*45 | 8 |
| Ramp | 500*180*45 | 720*180*45 |
| Pad Packing Size(mm) | 700*620*120 | 800*650*120 |
| Ramp Packing Size(mm) | 520*190*180 | 730*190*180 |
| Indicator Packing Size(mm) | 500*350*240 | 500*350*240 |
| Indicator weight | 9kg | 9kg |
| Pad and packaging weight(one piece) | 32kg | 46kg |
| Ramp weight(two pieces) | 7.6kg | 10.8kg |
| Single pad capacity | 10T | 15T |
| Allowed axle load | 20T | 30T |
| Safe overload | 125% | |
| Static Accuracy | 0.1%~0.3% | |

| | |
|--------------------------|--|
| Weighing pad description | advanced aviation aluminum pad,split type,with sheer beam load cells,with rubber ramps |
|--------------------------|--|

S Series Drawing



| 技术参数 | | | |
|--------|------------------------|----------|---------------|
| 额定载荷 | Rate load | t | 5~20 |
| 灵敏度 | Sensitivity | mV/V | (1.0~2.0)±0.1 |
| 综合精度 | Total error | %FS | ±0.05~0.1 |
| 零点平衡 | Zero balance | %FS | ±2 |
| 零点温度影响 | TC0 | %FS/10°C | ±0.1 |
| 输出温度影响 | TC Span | %FS/10°C | ±0.1 |
| 输入阻抗 | Input Resistance | Ω | 120~280 |
| 输出阻抗 | Output Resistance | Ω | 100~250 |
| 绝缘电阻 | Insulation Resistance | MΩ | ≥5000MΩ |
| 补偿温度范围 | Compensated Temp Range | °C | -10~+50°C |
| 工作温度范围 | Operating Temp Range | °C | -30~+70°C |
| 安全载荷 | Safe Load | %FS | 120 |
| 侧置载荷 | Lateral Load Limit | %FS | 150 |
| 推荐激励电压 | Recommend Excitation | V DC | 5~12 |
| 最大激励电压 | Maximun Excitation | V DC | 15 |
| 防护等级 | Protection Class | IP66 | |
| | | IP67而定制 | |

| 称量板尺寸 最大称量(单板) | A | B | C | D |
|-------------------|-----|-----|-----|----|
| 1~5t | 500 | 400 | 760 | 58 |
| 2~20t | 720 | 450 | 810 | 58 |
| 5~25t | 900 | 500 | 860 | 58 |

The following indicators can be selected according to the needs of use:

1、122YD wired dynamic indicator(One indicator with two pads)



- 1.1 Very good dynamic detection performance and high accuracy;
- 1.2 Backlit dot matrix LCD display, clearly visible during the day and night;
- 1.3 Convenient input of complete vehicle number
- 1.4 Built-in printer to print complete inspection results;
- 1.5 Can store test records of 1300 vehicles;
- 1.6 Complete search and statistics functions;
- 1.7 Dual-use, real-time display, real-time display of battery capacity, battery can maintain 40 hours of work, and automatic shut-down;
- 1.8 Can use car power 12VDC (cigarette lighter) to power and charge;
- 1.9 With RS232 interface

2、133WD wireless dynamic indicator(One indicator with two pads)



- 2.1 Very good dynamic detection performance and high accuracy;
- 2.2 Backlit dot matrix LCD display, clearly visible during the day and night;
- 2.3 Convenient input of complete vehicle number
- 2.4 Built-in printer to print complete inspection results;
- 2.5 Can store test records of 1300 vehicles;
- 2.6 Complete search and statistics functions;
- 2.7 Dual-use, real-time display, real-time display of battery capacity, battery can maintain 40 hours of work, and automatic shut-down;
- 2.8 Can use car power 12VDC (cigarette lighter) to power and charge;
- 2.9 With RS232 interface

3、 200 wireless dynamic colour touch screen indicator(One indicator with two pads)



- 3.1 The sensor uses embedded sensors, which are accurate and stable.
 - 3.2 Data transmission methods: wireless
 - 3.3 7-inch color touch screen display, high-end and practical.
 - 3.4 You can use touch input operation and wireless mouse operation, simple and fast.
 - Multiple work (traffic police, road administration, comprehensive) modes are available.
 - 3.5 stable performance, high performance waterproof, anti-vibration, anti-corrosion and so on.
 - Dual-channel design, using high-precision integrated sensors, high detection accuracy and failure low.
 - 3.6 statistical analysis software, easy to record, statistics, query; database provides model information,policies and regulations, technical support.
 - 3.7 Data Output: RS232, USB two data interfaces
- ### 4、 255 wireless static color touch screen indicator



- 4.1 Adopting 10.1-inch Android color touch screen display, high-end and practical
- 4.2 Can use touch input operation and wireless mouse operation, simple and fast
- 4.3 Multiple working modes (traffic police, road administration, comprehensive) are available
- 4.4 Dual-channel design, using high-precision integral weighing platform, high detection accuracy, low failure rate

4.5 Statistical analysis software, convenient for recording, statistics, and query; the database provides vehicle model information, policies and regulations, and technical support

4.6 Data Output: RS232/485, USB two data interfaces

Packing for one indicator with two weighing pads



ADD: UNIT 615A 6F ZHONG TIE FORTUNE PLAZA NO.398 JIAHE ROAD XIAMEN FUJIAN CHINA
TEL:86-592-6686182, Email:sales@kuanyi.com, <http://www.kuanyi.com>