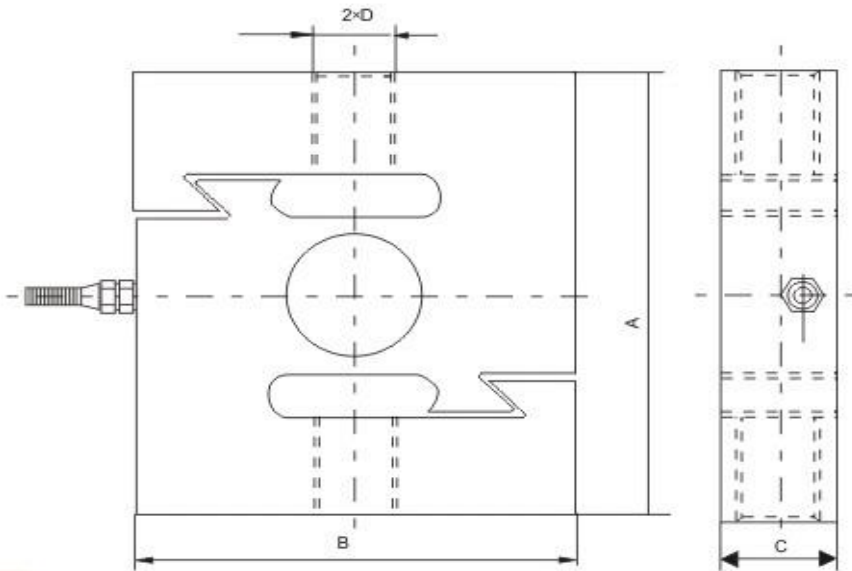
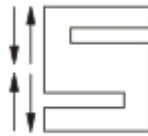


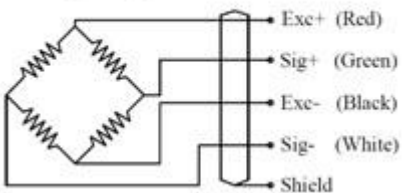


S Beam Tension Load Cells DEL



额定载荷(t) Rated Load	A	B	C	D
0.05,0.1,0.2,0.25 0.3,0.5,0.75	80	70	19	M12
1,1.5	80	70	25	M12
2.35	108	95	25	M18x15
7.5,10	178	130	51	M30x2
15,20	190	160	60	M39x2

Wiring Diagram



Specification

Application :	Crane Scales, Blending Scale, Packing scale, Testing Device
Model :	DEL
Capacity	0.05, 0.1, 0.2, 0.25, 0.3, 0.5, 0.75, 1, 1.5, 2, 3, 5, 7.5, 10,15, 20T
Output Sensitivity	2.0 ± 0.002 mV/V
Total Error	± 0.05 %F.S
Creep(30 min)	± 0.03 %F.S/30 Mins
TCO	±0.03 F.S/ 10 °C
TC SPAN	±0.03 F.S/ 10 °C
Zero Balance	±1.0 % F.S
Input Impedance	400 ± 20 Ω
Output Impedance	352 ± 3 Ω
Insulation Resistance	≥5000 MΩ
Recommend Excitation Voltage	10~12V /DC
Maximum Excitation Voltage	15V / DC
Operating Temperature Range	-30~+70°C
Temperature Compensated Range	-10~+40°C
Safe Overload	150 %F.S
Ultimate Overload	200 %F.S
Protection Grade	IP65 (0.05-5T)/ IP67 (7.5-20T)
Material	Alloy Steel / Stainless Steel
Cable Length	φ5×6M