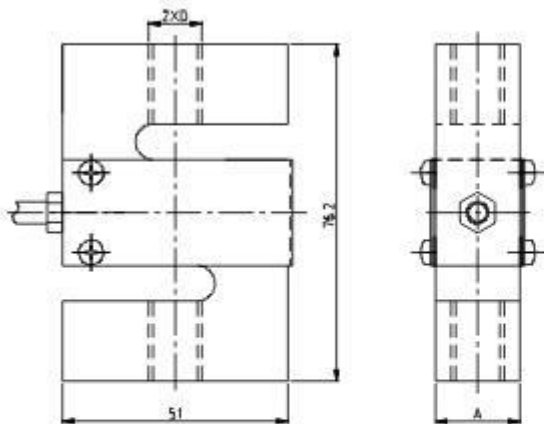




S Type Tension Load Cells DEFY

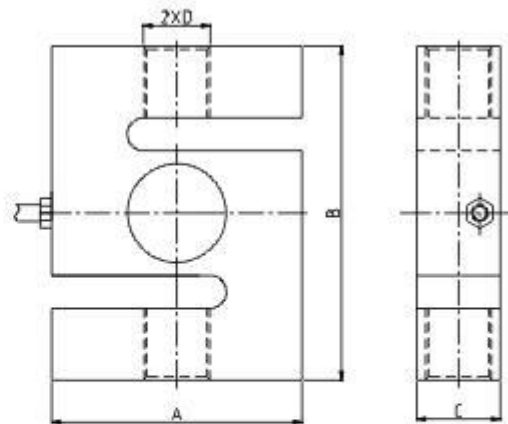


250lb~3klb



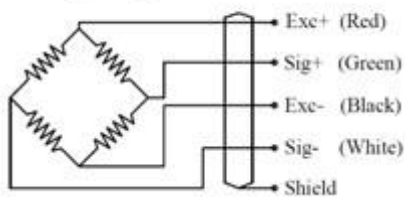
量程	A	D
250lb~300lb	12.4	3/8-24 UNF-2B
500lb~1.5klb	19.1	1/2-20 UNF-2B
2~3klb	25.4	1/2-20 UNF-2B

5klb~20klb



量程(klb)	A	B	C	D
5~7.5	76.2	107.9	25.4	3/4-16 UNF-2B
10	88.9	120.7	25.4	3/4-16 UNF-2B
20	127	178	51	1 1/4 -12UNF-2B

Wiring Diagram



Specification

Application :	Crane Scales, Hopper Scale
Model :	DEFY
Capacity	250, 300, 500, 750LB, 1, 1.5, 2, 2.5, 3, 5, 7.5, 10, 20KLB
Output Sensitivity	3.0 ± 0.003 mV/V
Total Error	± 0.03 %F.S
Creep(30 min)	± 0.03 %F.S
TCO	±0.03 F.S/ 10 °C
TC SPAN	±0.03 F.S/ 10 °C
Zero Balance	±1.0 % F.S
Input Impedance	400 ± 20 Ω(250-300LB)
Output Impedance	352 ± 3 Ω
Insulation Resistance	≥5000 MΩ
Recommend Excitation Voltage	10~12V /DC
Maximum Excitation Voltage	15V / DC
Operating Temperature Range	-30~+70°C
Safe Overload	120 %F.S
Ultimate Overload	150 %F.S
Protection Grade	IP65
Material	Alloy Steel / Stainless Steel
Cable Length	φ5×5M