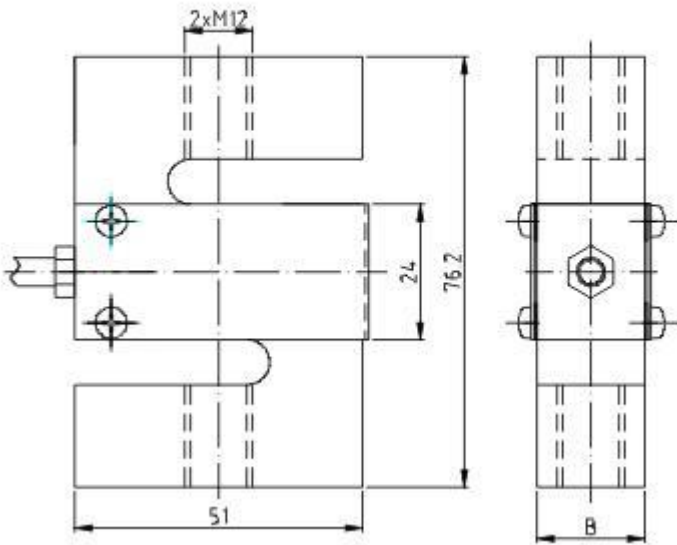




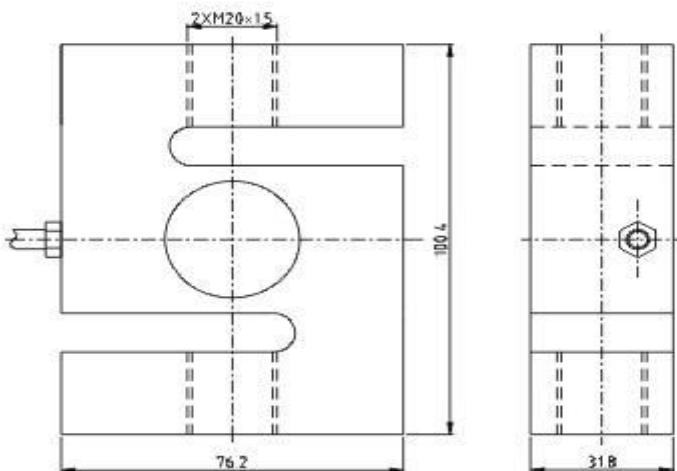
### OIML S Type Tension Load Cells DEE



50~1000kg

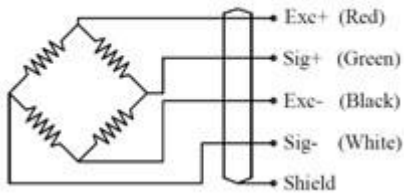


1.2~5t



额定载荷(kg) Rated Load	D	L	H	B
50~750	M12	51	76.2	19.1
1000	M12	51	76.2	25.4
1200~5000	M20x1.5	76.2	100.4	31.8

### Wiring Diagram



### Specification

Application :	Crane Scales
Model :	DEE
Capacity	50,100, 200, 250, 300, 500, 750, 1000,2000,3000, 5000KG
Output Sensitivity	2.0 ± 0.003 mV/V
Total Error	± 0.02 %F.S
Creep(30 min)	± 0.02 %F.S/30 Mins
TCO	±0.02 F.S/ 10 °C
TC SPAN	±0.02 F.S/ 10 °C
Zero Balance	±1.0 % F.S
Input Impedance	400 ± 10 Ω
Output Impedance	352 ± 2 Ω
Insulation Resistance	≥5000 MΩ
Recommend Excitation Voltage	10~12V /DC
Maximum Excitation Voltage	15V / DC
Operating Temperature Range	-30~+70°C
Safe Overload	150 %F.S
Ultimate Overload	200 %F.S
Protection Grade	IP67 (100-1000KG)/ IP68 (2000-5000KG)
Material	Alloy Steel / Stainless Steel
Cable Length	φ5×5M