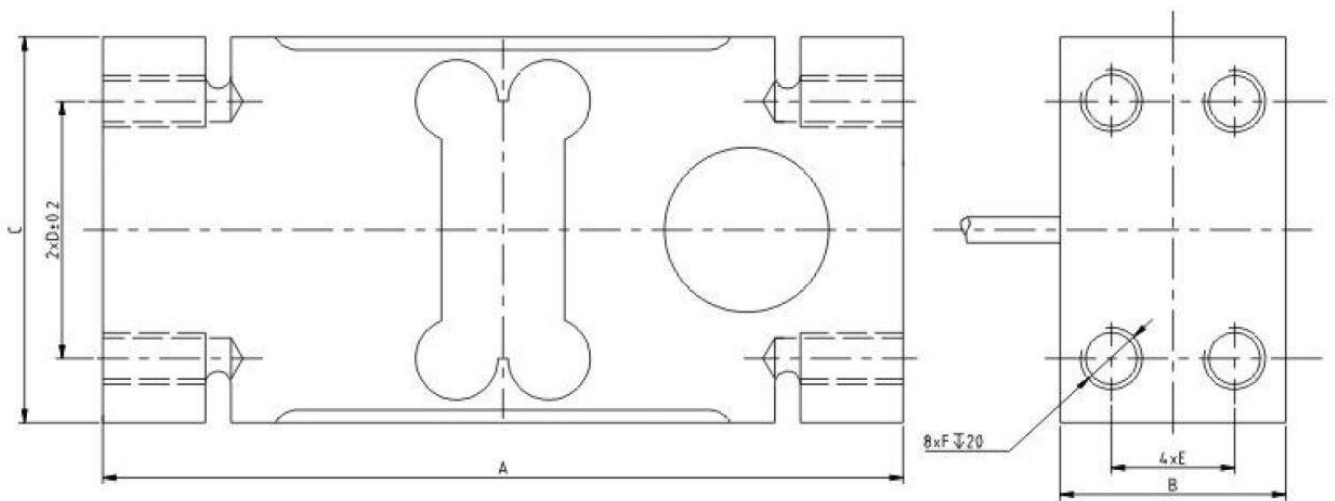


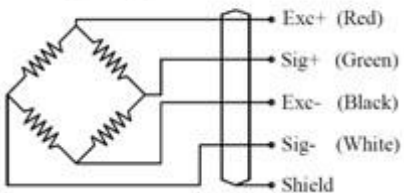


OIML Platform Scale Load Cells AMF



量程(kg)	A(mm)	B(mm)	C(mm)	D(mm)	E(mm)	F(mm)
50~200	156	44	75	50	24	M12
300~500	146	59	94	70	36	M12
750~2000	176	75	124	95	46	M16

Wiring Diagram



Specification

Application	Platform Scales, All kinds of Compression Testing Device
Rated Load	50,100, 200, 300kg,500kg,750kg, 1t, 2t
Accuracy Class	0.03%F.S
Sensitivity	2.0±0.2mV/V
Creep (30mins)	±166 ppm
Zero Balance	±3% Emax
TC ZERO	±17.5 ppm/°C
TC SPAN	+20~+40°C : ±17.5 ppm/°C
	-10~+20°C : ±11.67 ppm/°C
Input Resistance	404±15Ω
Output Resistance	350±3Ω
Insulation resistance	≥2000MΩ
Norminal Temperature Range	-10~+40°C
Service Temp Range	-20~+50°C
Safe load limit	150%F.S
Over load limit	200%F.S
Norminal of Range Excitation	10~12V DC
Protection Class	IP65
Material	Aluminium
Cable: Length;	3m, Diameter: Φ5mm
Max Platform Size:	600×600 (50-200kg) 600×800 (300-500kg) 1200×1200 (1-2t)