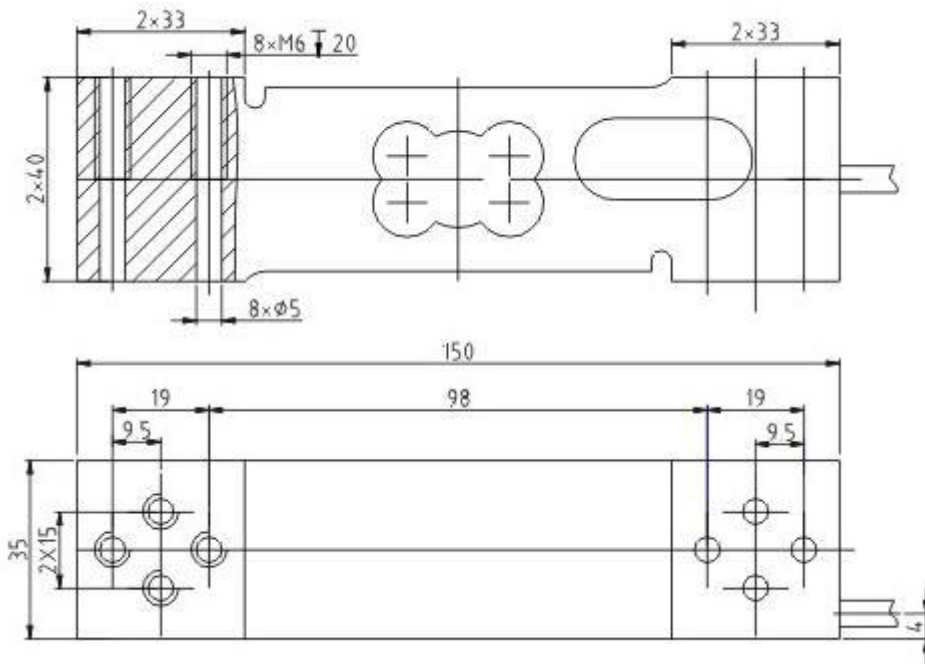
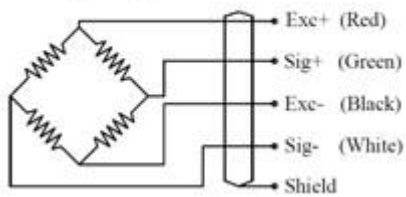




OIML Single Point Load Cells AME-B



Wiring Diagram



Specification

Application :	Platform Scale, Bench Scales
Model :	AME-B
Capacity	15, 20, 30, 35, 50, 60,100,150, 200, 300, 500KG,
Output Sensitivity	2.0± 0.2 MV/V
Accuracy Class	OIML C3
Creep(30 min)	±166 ppm
Zero Balance	±3%Emax
TC ZERO	±17.5ppm/°C
TC SPAN	+20~+40°C, ±17.5ppm/°C
	-10~+20°C, ±11.67ppm/°C
Input Impedance	404 ± 15Ω
output Impedance	350 ± 3Ω
Insulation Resistance	≥2000 MΩ (50VDC)
Recommend Excitation Voltage	10V
Maximum Excitation Voltage	15V
Compensated Temperature Range	-10~+40°C
Operating Temperature Range	-20~+50°C
Safe Overload	150 %Emax
Ultimate Overload	300 %Emax
Protection Grade	IP65
Material	Aluminium
Cable Length	Φ5× 1.80 M
Recommended Platter Size	400 × 400 MM
Recommended Installation Torque	10N.m