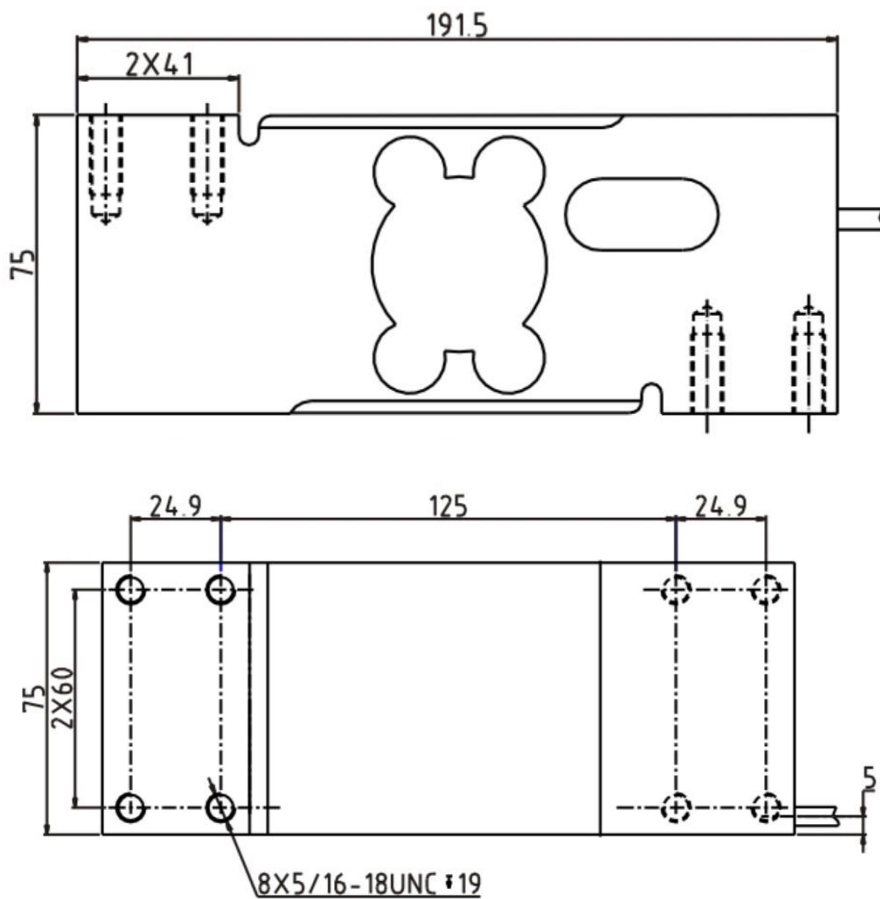
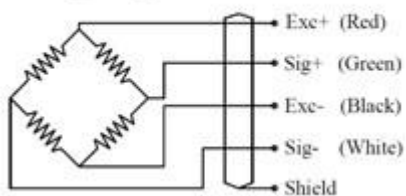




### OIML Single Point Platform Scale Load Cells AMD-Q



#### Wiring Diagram



**Specification**

Application :	Blending Scale, Packing Scale, Platform Scale, Dynamic Testing System
Model :	AMD-Q
Capacity	50,100,200,300,500,600,635,1000KG 100,250,500,750,1000, 2000LB
Output Sensitivity	2.0± 0.2 MV/V
Accuracy Class	C3 Class
Creep(30 min)	±166ppm
Zero Balance	±3% Emax
TC ZERO	±17.5ppm/°C
TC SPAN	+20°C-+40°C, ±17.5 ppm/°C -10°C-+20°C, ±11.67ppm/°C
Input Impedance	404 ±15Ω
output Impedance	350 ± 3Ω
Insulation Resistance	≥2000 MΩ (50V DC)
Recommend Excitation Voltage	10V DC
Maximum Excitation Voltage	15V DC
Compensated Temperature Range	-10~+40°C
Operating Temperature Range	-20~+50°C
Safe Overload	150 %Emax
Ultimate Overload	300 %Emax
Protection Grade	IP65
Material	Aluminium
Cable Length	Φ5× 3M
Recommended Platter Size	600 × 800 MM
Recommended Installation Torque	25N.m