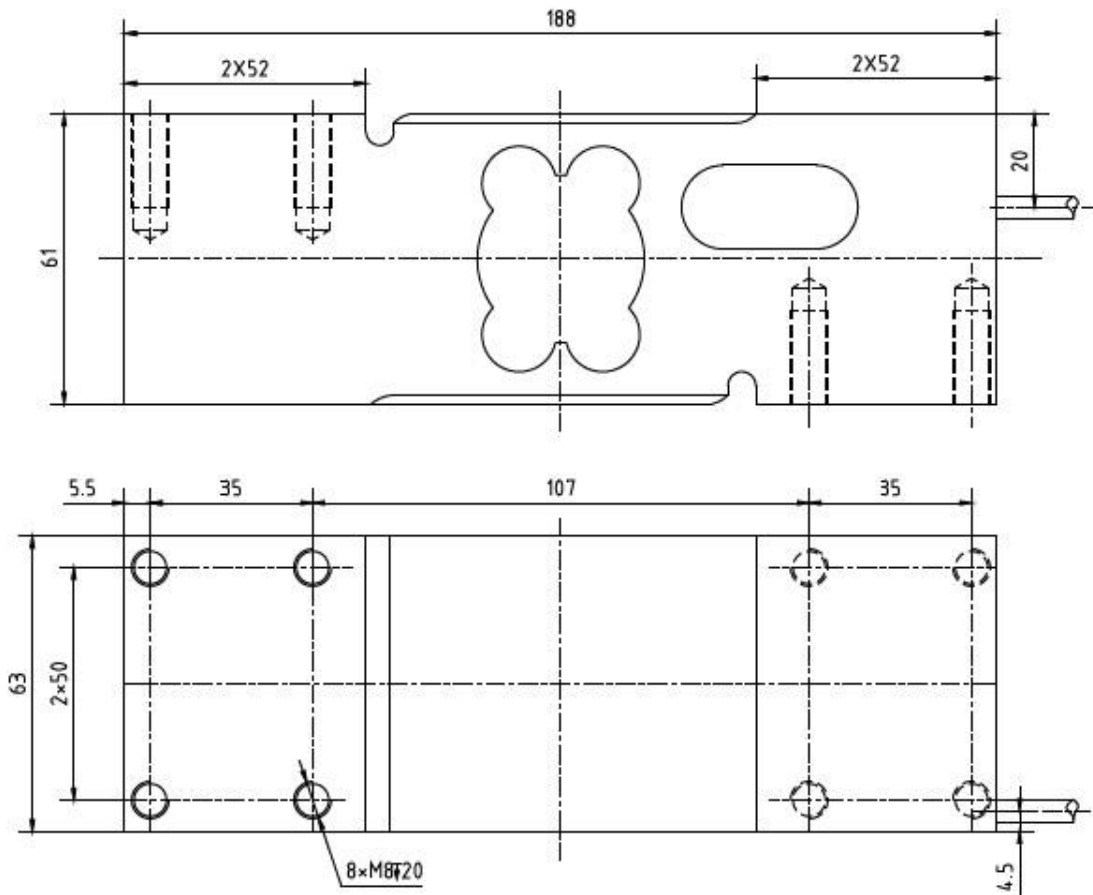
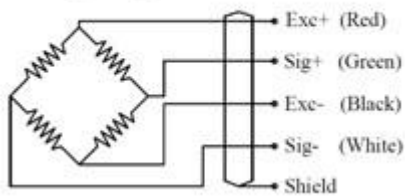




OIML Single Point Bench Scale Load Cells AMD-J



Wiring Diagram



Specification

Application :	Platform Scale, compression testing situation
Model :	AMD-J
Capacity	30,50,75,100,150,200,250,300,400,500,635,750,800,1000KG
Output Sensitivity	2.0± 0.2 MV/V
Accuracy Class	OIML C3
Creep(30 min)	±0.02%F.S
Non-linearity	±0.02%F.S
Hysteresis error	±0.02%F.S
TC ZERO	±0.02%F.S/10°C
TC SPAN	±0.02%F.S/10°C
Input Impedance	404 ±15Ω
output Impedance	350 ± 3Ω
Insulation Resistance	≥2000 MΩ
Recommend Excitation Voltage	10V
Maximum Excitation Voltage	12V DC
Compensated Temperature Range	-10~+40°C
Operating Temperature Range	-20~+50°C
Safe Overload	150 %E _{max}
Ultimate Overload	300 %E _{max}
Protection Grade	IP65
Material	Aluminium
Cable Length	Φ5× 1.80 M
Recommended Platter Size	500 × 500 MM
Max Platform Size	600*800mm